

Welcome to Boise



I may not be the first person to welcome you to Boise, but I can say with certainty that I will be one of many who will congratulate your decision to be a part of this great community and be excited to share with you all of the wonderful attributes that our city has to offer. It is my goal to acquaint you with some local lifestyle highlights and also get you familiar with the Boise area. Please don't hesitate to use me as a resource, I look forward to getting to know you in the process of relocating to the Treasure Valley!



DAVID ANDREWS
Real Estate



Activities:



What to do in Boise with only **3** days?

□ 3 square meals...

Breakfast:

- Big City Coffee
- Java in Hyde Park
- Goldy's Breakfast Bistro

Lunch:

- Bittercreek Pub
- Bardenay
- 13th Street Pub & Grill

Dinner:

- Fork
- The Matador
- Berryhill & Co.



□ 3 square miles...

Real Estate- Neighborhoods to consider visiting...

Boise's North End Historical District

Surprise Valley

Hyde Park

Bown Crossing

Warm Springs Avenue

The Bench

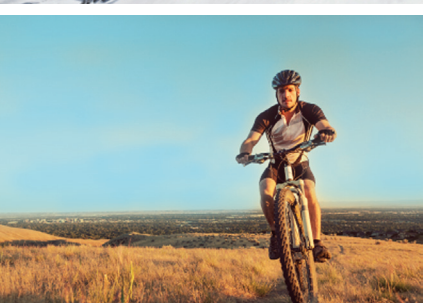
Harris Ranch

The Highlands



□ 3 squares to check...

- Boise Zoo – great downtown location with easy access and plenty of parking.
- Greenbelt Path – One of our greatest conduits of recreation, enjoy the river views and meandering pathway.
- Saturday Farmer's Market in Downtown Boise – A bevy of local art, food and entertainment.



Testimonials:



Recession Recovery: Brookings Institute (March 2012) - The MetroMonitor lists Boise - "one of the knowledge capitals of the West" and one of the top 20 fastest-recovering cities by growth, employment and housing prices.

Family-friendly environment: Forbes (April 2012) - Boise ranks #2 on Forbes list of Best Places to Raise a Family (based on median income, overall cost of living, housing affordability, commuting delays, percentage of families owning homes, crime rate and education quality).

Outside Magazine, 2010 Best Town in the Western U.S.:

"Boise, to put it mildly, has been on a roll. Government, education, and health care remain core industries, but dozens of high-tech startups have moved to town, joining behemoths like Hewlett-Packard and Micron Technology...Boise has managed its growth impressively well: The city is home to nearly 2,000 acres of parks and a 25-mile greenbelt... Older neighborhoods have that Boulder vibe—cruiser bikes, farmers' markets, and prayer flags—only with reasonably priced homes."



#6 America's Hottest Music Cities
The Atlantic, March 2012

"Fittest Towns of the West"
Sunset, February 2012

#5 Healthiest Cities
Women's Health/Men's Health, January 2012

#2 Five Safest Cities for Driving in America
Allstate Insurance Co., September 2011

#9 Top Entrepreneurship & Innovation
U.S. Chamber of Commerce, June 2011

#8, 10 Best Places to live in the U.S.
CBS Market Watch, August 2011

#7 Long-Term Job Growth Rate
U.S. Chamber of Commerce, June 2011

#10 Best Places to Find A Job
The Fiscal Times, November 2011–

#16 Most Innovative City
Forbes.com, June 2010

#5, America's 15 Most Active Cities
Time Healthland, February 2011

#7 Best Places for Women
Women's Health Magazine, December 2010

Boise State's Bronco Stadium is one of America's Best College Football Stadiums: CNN Travel, November 2011

#3, 25 Best Places to Retire
CNNMoney.com, September 2011

#8 Best Place for Paddling in the City
USA Today, August 2011

#17 of 384 Cities for Vitality
Moody's Analytics, April 2011

#6 Best Place to Retire
Yahoo! Finance, September 2010

In the West: 20 Towns of the Future
Sunset Magazine, February 2010

#8 Best Mid-size Metropolitan Area:MSNBC.com, March 2009

#5 Best Market for Small Businesses
Bizjournal.com's Best Places to Start a Small Business, February 2009

Award for Municipal Excellence
National League of Cities, November 2008

"North End" Named to Top 10 Best Neighborhoods in the Country
American Planning Association, October 2008

#2 Most Secure U.S. Place
Sperlings, August 2008

#1 Economic Vitality Among U.S. Metro Areas
Brookings Institute Economic Vitality Report, June 2008

#2 Best of the Best Places
MSNBC Top 10 Best Places to Live in the U.S., June 2008

Quick Facts:

Facts of Life:

CLIMATE

- Elevation (Boise): 2,730 feet
- Annual days of sun: 234
- Annual precipitation: 12.1 inches; annual snowfall: 21.4 inches
- Average high temperature (July): 90.2 F; average low temperature (January): 21.6 F
- Average afternoon humidity: 43%

HIGH QUALITY OF LIFE

- The Boise-Nampa area is ranked as one of the most secure large metropolitan areas in the U.S. out of 114 regions nationally with populations of over 500,000 (Farmers Insurance Group)
- Average commute time is only 18 minutes
- Four seasons of world-class outdoor recreation at your doorstep: skiing, hiking, cycling, fishing, rock climbing, rafting and more
- A full complement of cultural amenities including the nationally recognized Idaho Shakespeare Festival, Trey McIntyre Project, Boise Philharmonic, Opera Idaho and others
- Excellent K-12 schools and post-secondary educational opportunities
- Ski Resorts: From Boise Bogus Basin is 45 mins away, Brundage in McCall is 2 hours and Sun Valley is 3 hours.

LOW COSTS FOR BUSINESS AND LIVING

- The overall cost of doing business is nearly a third lower than California and Washington
- The cost of living is 96 percent of the national average
- The average cost of a home is approximately \$155,000 in Ada County and \$79,000 in Canyon County (compared to a national average of \$226,000)
- No tax on services

TRAINED AND PRODUCTIVE WORKFORCE

- Workforce within a 45-minute draw area: 330,000
- Average age: 33.1 years
- More patents are generated per capita in the Boise Valley than any other region in the country
- Of the Boise Valley's 280,000-person workforce, nearly 110,000 are degreed workers

ACCESSIBLE TRANSPORTATION

- Bisected by Interstate 84 and Interstate 184
- Boise Airport serves more than 3,000,000 people a year and is less than five miles from downtown Boise
- ValleyRide provides public bus transportation throughout the Boise Valley
- Idaho Northern & Pacific Railroad (INPR) provides freight service over four branch lines in southwestern Idaho and northeastern Oregon

GROWING POPULATION

- Comprised of the following communities: Boise, Meridian, Nampa, Eagle, Star, Emmett, Garden City, Caldwell and Mountain Home
- Total population within a 45-minute draw area: 632,000--32 percent growth since 2000
- Idaho is among the top five fastest growing states in the nation (National Census Bureau)

DIVERSITY

- Over 90 different languages are spoken in the Boise School District
- Home to the second-largest Basque population in North America
- Home to one of the oldest synagogues in the western United States
- More than two dozen language courses available through local universities and community education programs
- Annual diversity events and resources include the Soul Food Extravaganza, PRIDE activities, Hispanic Cultural Center and Black History Museum

NATIONAL RANKINGS

- Boise is #8 in "Best Places to Live in the US" (Wall Street Journal's Market Watch, Aug. 2011)
- Boise is among the 25 "Best Places for Business and Careers" (Forbes, April 2010)
- "Best Town in America" (Outside magazine, August 2010)
- #9 Healthiest State (America's Health Ranking.org, November 2010)
- #5 Lowest Crime Rate in the Country (CQ Press, 2010)
- #7 Long-Term Job Growth Rate (U.S. Chamber of Commerce, June 2011)
- #9 Top Entrepreneurship & Innovation (U.S. Chamber of Commerce, June 2011)

SOURCE: Boise Valley Economic Partnership (www.bvep.org)



Each Office is Independently Owned and Operated

